



OUR LADY OF GUADALUPE CATHOLIC SCHOOL

A Ministry of Our Lady of Guadalupe Parish
Serving Preschool through 8th Grades



VISION 2025: ACHIEVING EXCELLENCE

Our plan to dramatically improve the achievement of every student enrolled at OLG



OUR LADY OF
GUADALUPE
CATHOLIC SCHOOL

3401 SW Myrtle St. Seattle, WA 98126 | guadalupe-school.org

Overview

Our Lady of Guadalupe provides strong core academics and enrichment opportunities

- Teaches Gospel values in an environment that welcomes and celebrates diversity
- Helps students develop healthy relationships with each other
- Is committed to retaining excellent teaching staff, and supporting staff with competitive salaries and professional development



Our Strategic Plan

This plan represents a bold vision of excellence for every child enrolled at Our Lady of Guadalupe.

The school began the Strategic Planning process in 2019 and carried it through into 2020. We called together a diverse, representative group of parents to develop the long-range initiatives. Meetings were held with parents, staff, and parishioners, and after careful listening and review, the initiatives were respectfully handed over to OLG School Staff and the School Commission who adjusted and finalized the plan during the COVID-19 pandemic. The plan was reviewed by the School Commission, and will now be presented to the parent community for feedback.

OUR THREE BROAD INITIATIVES:

- 1 Emphasize Faith and Service**
- 2 Enrich the Curriculum with an emphasis on Core Skills**
- 3 Enhance Facilities**



Faith & Service

Emphasize Faith and Service by teaching Gospel values



Curriculum

Enrich the Curriculum with an emphasis on Core Skills



Facilities

Enhance safety, visibility, and sustainability



Our Values

Inspired by our Faith, Curriculum, Innovation, and Community.

Encouraging Creativity in our Process and Research-based Strategies



Our Mission

Our Lady of Guadalupe School fosters Gospel values, inspires academic excellence, and develops service and leadership.

We face this task as a sacramental community united and empowered by the Holy Spirit.

Our Vision

Our Lady of Guadalupe School will emphasize challenge, engagement, and ownership of one's education as key to nurturing faithful life-long learners and servant leaders. Supporting our effort will be improved assessment, enriched core curriculum better tailored to individual students, and competitive compensation and training for staff.

Faith

Our school is rooted in Catholic identity and religious education.

Catholic faith is the heart of Our Lady of Guadalupe School. Students learn about religion through curriculum and lived experiences: connecting with their “faith families” at Mass, observing the Sacraments, and serving others. Elements of our faith are intertwined throughout our students’ studies of history, science, technology, social justice, ethics, and responsibility.

Our Lady of Guadalupe continues to address the challenge of encouraging our school families to participate as much as possible in parish life, including attendance at weekend Masses and especially involvement in service projects and other parish activities. Nearly all of OLG’s families are registered parishioners. The church and school are working together to ensure our school families set a positive

example for our students and embrace a deeper connection to our vibrant parish community.

We’re working to create a more interconnected school and parish. We celebrate school accomplishments in our church, and invite church members to engage on different subjects with our students and staff in school. We’re continuing an annual survey in the school and parish to generate new ideas to build our faith and find new ways to serve our community.

Through celebrating the rich diversity of our school and the many cultures represented there, we strive to support families of all backgrounds with the embrace of Christ. We are a school that is proud to be part of a parish community of open arms and loving hearts.





What We'll Do

- ▶ **Build our parish/school connection** by continuing our Faith Family Sundays, class leadership of post-Mass coffee & donut hours, and class leadership of free community meals.
- ▶ **Increase our service outreach** by encouraging participation in events such as the parish Day of Service, connection with migrant families, and Books to Prisoners programs.
- ▶ **Encourage the use of parishioner experience in the classroom** by inviting subject experts to assist our teachers on specific topics.
- ▶ **Expand our life of sacramental faith** by increasing religious instruction in 1st grade to lay a solid groundwork for First Communion curriculum the following year; partner with parish on Confirmation instruction moving into the Middle School years.
- ▶ **Provide additional opportunities for cultural diversity and understanding** as reflected in our curriculum, instructional choices, and celebrations such as class service projects, the language and heritage of Our Lady of Guadalupe, and our annual Cultural Night.
- ▶ **Improve our interfaith dialogue** by expanding our world religion curriculum and inviting speakers of different religious backgrounds, emphasizing awareness, tolerance, and understanding with shared learnings between our church, school, and community.

Academics

OLG curriculum has blossomed over recent years.

Common Core Standards have been adopted for Math, Reading, and English Language Arts. In 2019 we fully adopted Next Generation Science Standards with teacher training and newly aligned FOSS kits.



Students now have more extracurricular choices, including offerings such as choir, Spanish, chess, dance, theatre, and art. Middle School students have additional leadership, service and academic opportunities such as Green Team, Student Council, Peer Tutoring, and math and reading competitions.

We have expanded support programs to meet the diverse needs of our students, especially in core academic areas, through the increased hiring of certified, non-certified, and volunteer level support staff. OLG successfully uses federal resources and funding in a way that enriches the learning experience for our students, especially through Sound Partners and the allotment of teacher aides for students with special needs. We also recently hired a full-time Development Director who is focused on expanding resources for the school.

OLG teachers model life-long learning by taking leadership roles throughout the Archdiocese of Seattle. Examples include serving on curriculum committees, spearheading new programs and processes, chairing teacher leader groups, and mentoring others in and outside of OLG. Through these leadership opportunities, we enrich our learning environment, demonstrating excellence and service.

“

Our son has discovered a passion for social studies and history thanks to StoryPath, he's not intimidated by math, his writing has grown and developed, and more than that, he's an analytical thinker. He has grown SO much!

– OLG PARENT

What We'll Do

- ▶ **Help our students develop healthy relationships with themselves and others.** With the help and guidance of our school counselor, OLG will continue to refine our Social Emotional Learning program. In addition, OLG leadership will establish a researched-based school wide behavior program to support students with consistent expectations.
- ▶ **Continue to provide strong core academic programs.** Our Curriculum Review Cycle for all subject areas focus teacher professional development on strengthening instruction, updating curriculum and assessments, and ensuring vertical alignment across all grade levels. In addition, we will continue to enrich and develop specialist programs such as arts, Spanish, technology, and physical and mental health education. We will continue to build on the success of our academic programs with the help and expertise of our Development Director.
- ▶ **Increase research-based resources and staff education to meet the needs of our diverse student population.** We recognize that students come from different backgrounds and have different learning needs. We will provide a challenging and engaging learning environment, as well as provide support for various educational and social-emotional student needs.
- ▶ **Retain our high-quality OLG teachers and staff by striving to meet competitive salaries, and supporting them in their professional development.** We recognize that excellent and caring teachers are the backbone of our school. To that end, we will explore benefits such as on-campus and off-site professional development, mentorships and collaborative opportunities, retreat-related and sabbatical benefits, stipends for special programs, and awards.



Facilities

Building a safe and sustainable environment for learning

We aim to provide an environment that maximizes the potential of every student. In the last 5 years, we have made substantial progress in achieving the facilities goals we set out in our last Vision plan. Major accomplishments during this period include:

Developing the early learning center (ELC).

Opening the ELC required substantial renovations to the space adjacent to the Parish hall. Completion of these improvements expands the breadth of our educational offerings, and provides a new opportunity for families with younger children to join the OLG school community.

Upgrading technology. Increasing internet speed with our new fiber network, acquisition of new ChromeBooks, and installation of 'smart' white boards in our classrooms gives our faculty and students the tools they need to teach and learn effectively.

Library renovation. Remodeling the library has made this a more comfortable and effective space for our students.

Interior improvements. New windows in several classrooms and a remodeled entryway improve energy efficiency and make OLG a more inviting building. The OLG staff worked to improve the school's HVAC, room design and arrangements, and training and monitoring programs in response to the COVID-19 pandemic.

Eliminating the gym debt. Paying off the debt on the Walmsley Center (gym) frees up money for other needed improvements, and helps keep the school financially sound.

These accomplishments demonstrate our commitment to a safe and sustainable campus





What We'll Do

- ▶ **Finish what we've started.** We will complete needed window ceiling tile and carpet replacement to keep OLG fresh and functional for a new generation of students, and to optimize space throughout our campus buildings.
- ▶ **Develop a comprehensive campus safety plan.** The safety of students, faculty and staff is our top priority. We will perform a safety audit and perform renovations necessary to increase the safety and security of our school. We will continue to monitor and adjust our facilities, training programs, and safety protocols in response to the pandemic and other health and safety-related challenges. We will also continue our work to ensure that all students and staff know how to respond in a wide range of emergencies.
- ▶ **Make OLG more visible.** We will perform external renovations to make OLG a more attractive building and to highlight our mission. This includes new and more prominent campus signage, improved lighting and enhanced landscaping and garden projects.
- ▶ **Increase sustainability.** Sustainability not only helps the environment, but also helps lower costs and teaches our students how to be good stewards of God's creation. We will keep sustainability in mind during all our facilities improvements, and especially during renovations of our aging bathrooms and thermostats.



“

*OLG is our choice for our children
because of its community.*



Steering Committee Members

Tony Angello
Parent

Brian Callanan
Parishioner

Dan Campbell
Parent

Brenda Croft
Parent

Jennifer Dempsey
Parishioner

Seth Doyle
Parent

Karen Fitton
Parent

Markee Foster
Parishioner

Veronica Foster
Parishioner

Rita Gazewood
Teacher

Robert Gazewood
Parent

Meg Halverson
Parent

Jason Howell
Parent

Alder Kuhn
Parent

Dan Merlino
Parishioner

Daren Monroe
Parishioner

Katie Richmond
Parent

Helaina Sorey
Parent

Catherine Wilson
Teacher

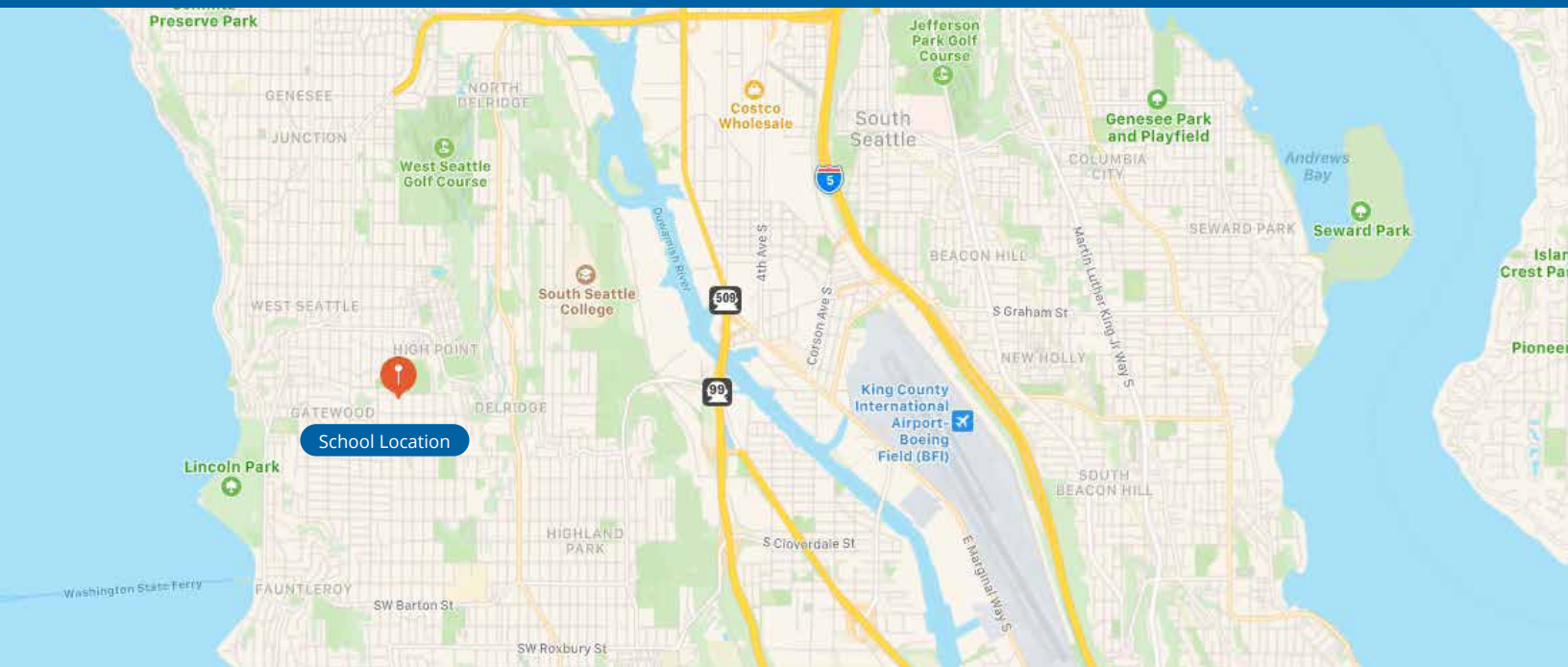
Fr. Kevin Duggan
Pastor

Anton Kramer
Principal

We value its acceptance of everyone and how everyone comes together to maintain our strength as this community we cherish. – OLG PARENT



Our Lady of Guadalupe School is conveniently located in the heart of West Seattle.



**Our Lady of Guadalupe
Catholic School**

3401 SW Myrtle St, Seattle, WA

Phone : (206) 935-0651

Fax : (206) 938-3695

info@guadalupe-school.org

FB : [OLGSchoolSeattle](https://www.facebook.com/OLGSchoolSeattle)

IG : [olgschoolseattle](https://www.instagram.com/olgschoolseattle)

www.guadalupe-school.org